



LINEAIR MOTION KIT

ABOUT COBOTRACKS

Cobotracks is located at the technology park “Thor Park” in Genk Belgium. It offers solutions to companies who would like to extend the reach of their cobot. The cobot can move across a linear track and for example stack multiple pallets.

For Universal robots Cobotracks developed the “Linear Motion Kit”. This kit has compatible software for the Universal robot which guarantees a plug & play solution. For other cobot brands the “Linear Motion Axis” offers the solution to extend their range. Cobotracks uses the “Linear Motion Kit” as the base to offer customized solutions for each cobot application.

COBOTRACKS STANDS FOR:



EXPERTISE



CUSTOMIZED



QUALITY



**SHORT LINES OF
COMMUNICATION**



FEATURES

- ▄ Robust industrial steel design with SEW Servo Drive
- ▄ High accuracy
- ▄ 100% cycle time with 100% load on robot
- ▄ Customized solutions
- ▄ Length up to 50m
- ▄ Collision detection
- ▄ UR Caps Software
 - » Very easy to install and program
 - » Infinite programming points
 - » Adjustable speed
 - » Movement robot during movement LMK



APPLICATIONS

EXTEND THE REACH OF YOUR COBOT



**MULTIPLE MACHINE
TENDERING**



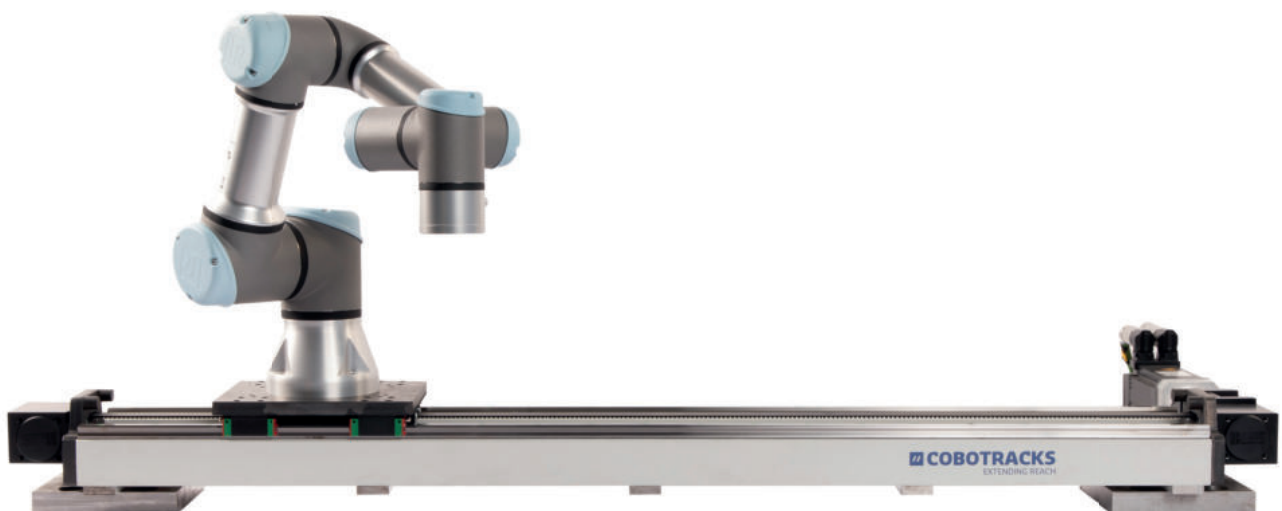
**MULTIPLE PALLET
PALLETISING**



**WELDING
BIG PARTS**



**POLISHING &
GLUING BIG PARTS**



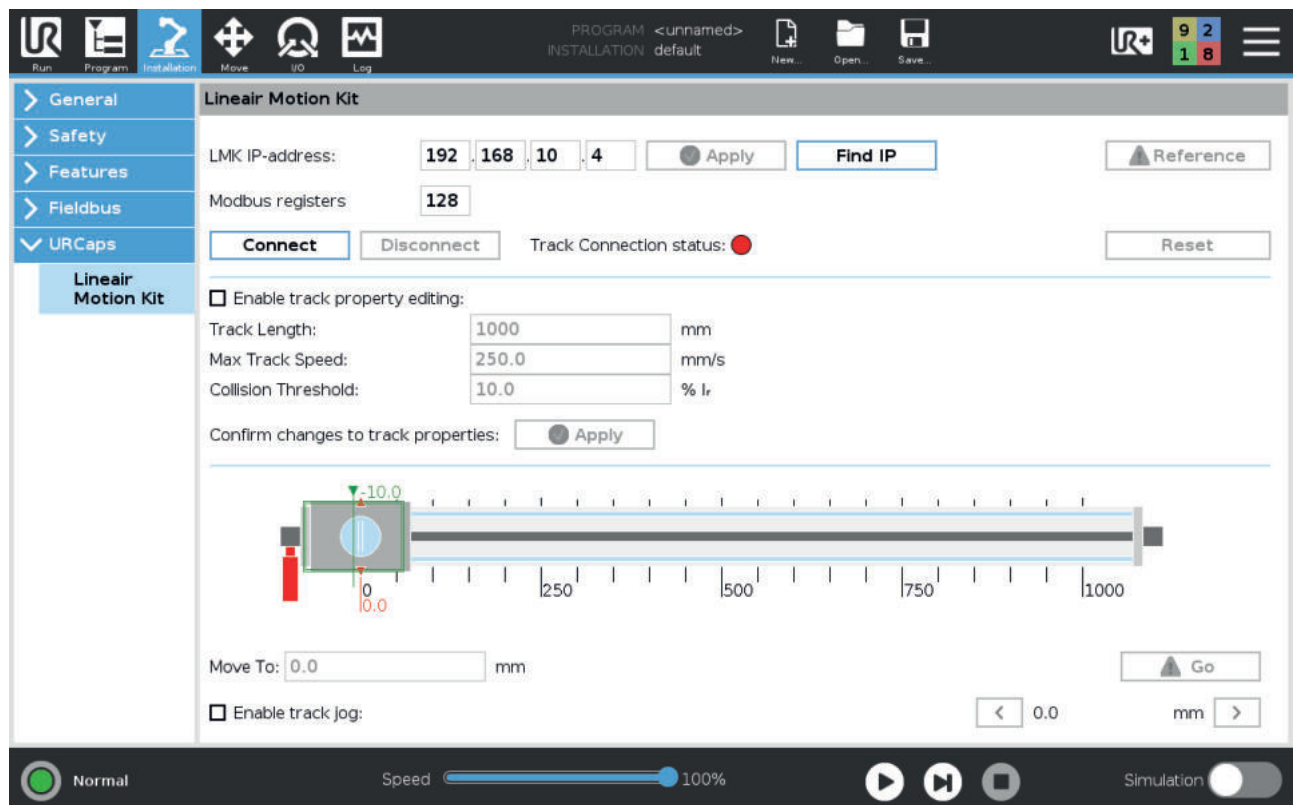
UR CAPS SOFTWARE

Setup

- ” The installation can be done in less than 30 min.
- ” Automatic IP search function
- ” Properties track to set: Track length and maximum speed
- ” Set Collision detection threshold

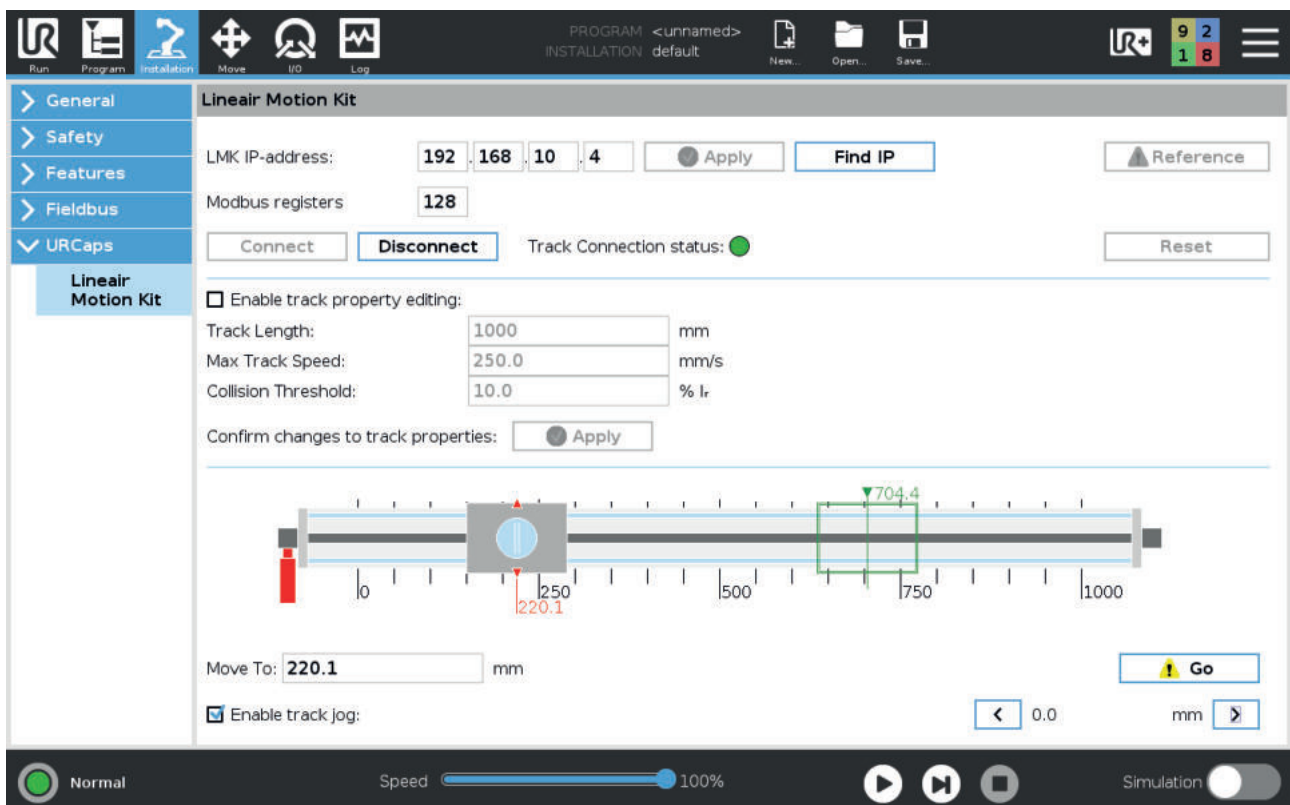
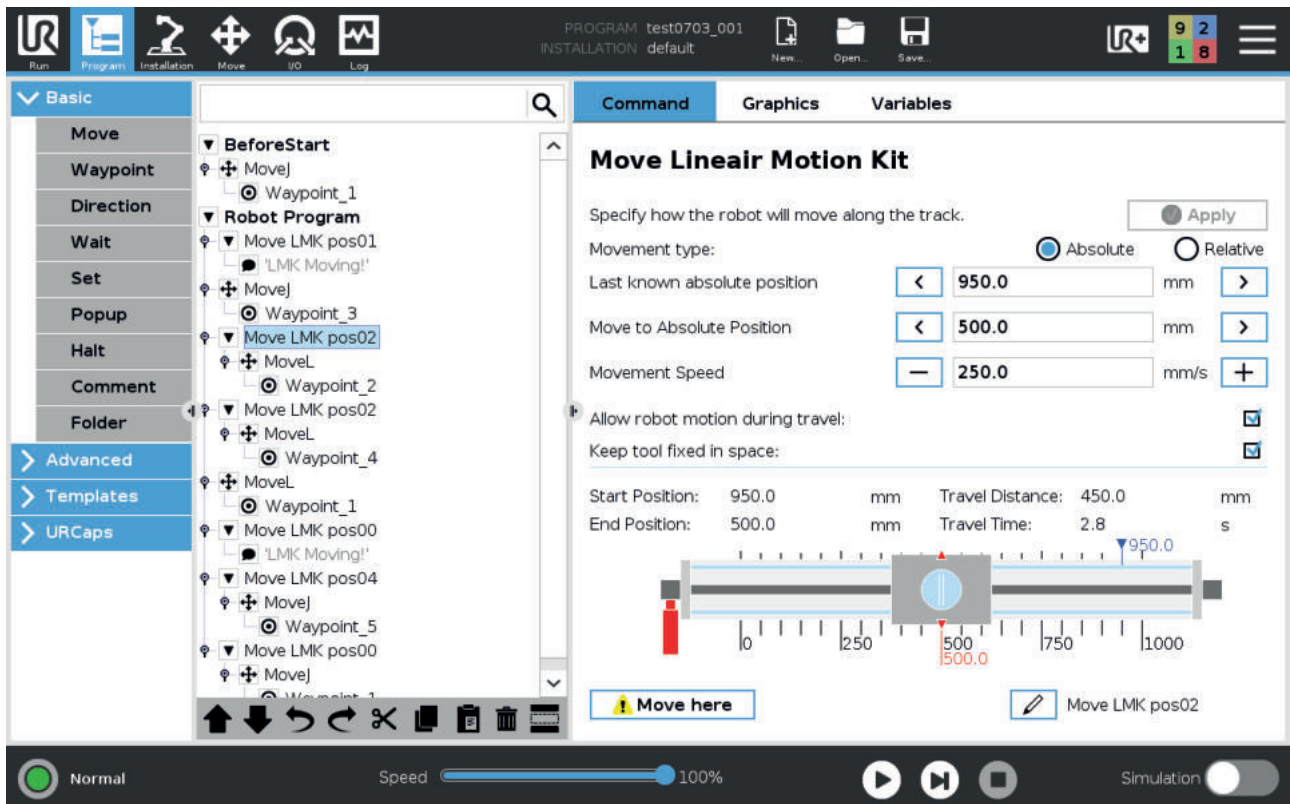
Programming

- ” The LMK can be integrated with the UR Caps module
- ” Programmable with absolute or relative values
- ” Adjustable speed during program
- ” Robot motion during travel on Linear Motion Kit
- ” Option to keep tool fixed in space during travel on Linear Motion Kit



UR CAPS SOFTWARE

Due to the integration of the UR Caps Software, the Linear Motion Kit is very easy to install and to program. Within the software, all settings and parameters are displayed in such a clear manner that the configuration of the LMK is done in no time.

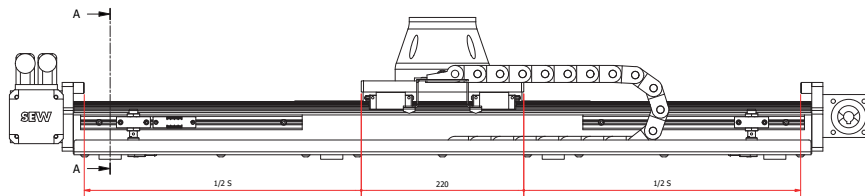
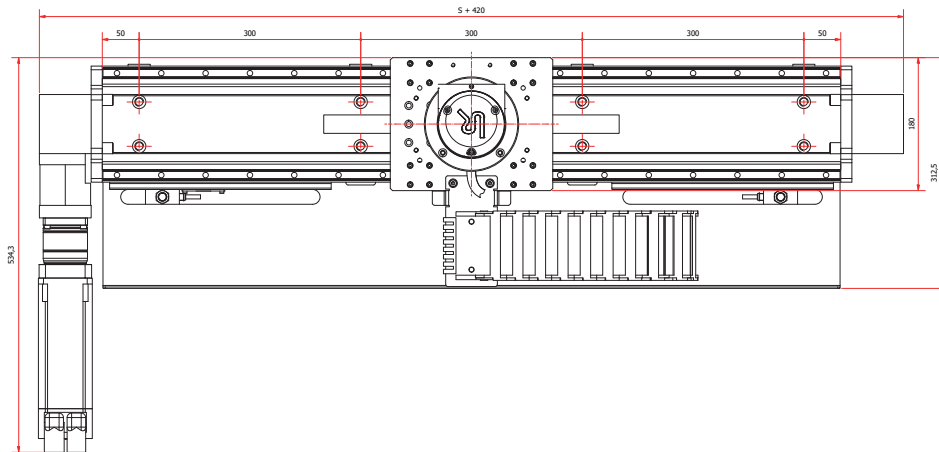




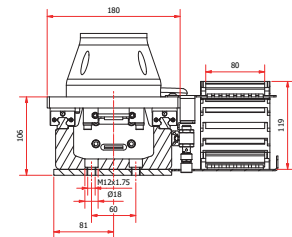
LINEAR MOTION KIT INCLUDES

- // Axis with limit switches
- // SEW Servo motor & Drive
- // Planetary Gearbox
- // Cables
- // Cable chain
- // USB with URcap software
- // Control Box
- // English instruction Manual

LMK3 - B



A-A (1 : 3)



LMK3 - B	
Robot type	UR3/UR3e
Max. stroke [mm]	50.000
Max. speed [mm/sec]	250
Duty cycle [%]	100
Repeatability [mm]	0.05
Ambient temperature [°C]	-10 °C to 60 °C
Electrical input	380V

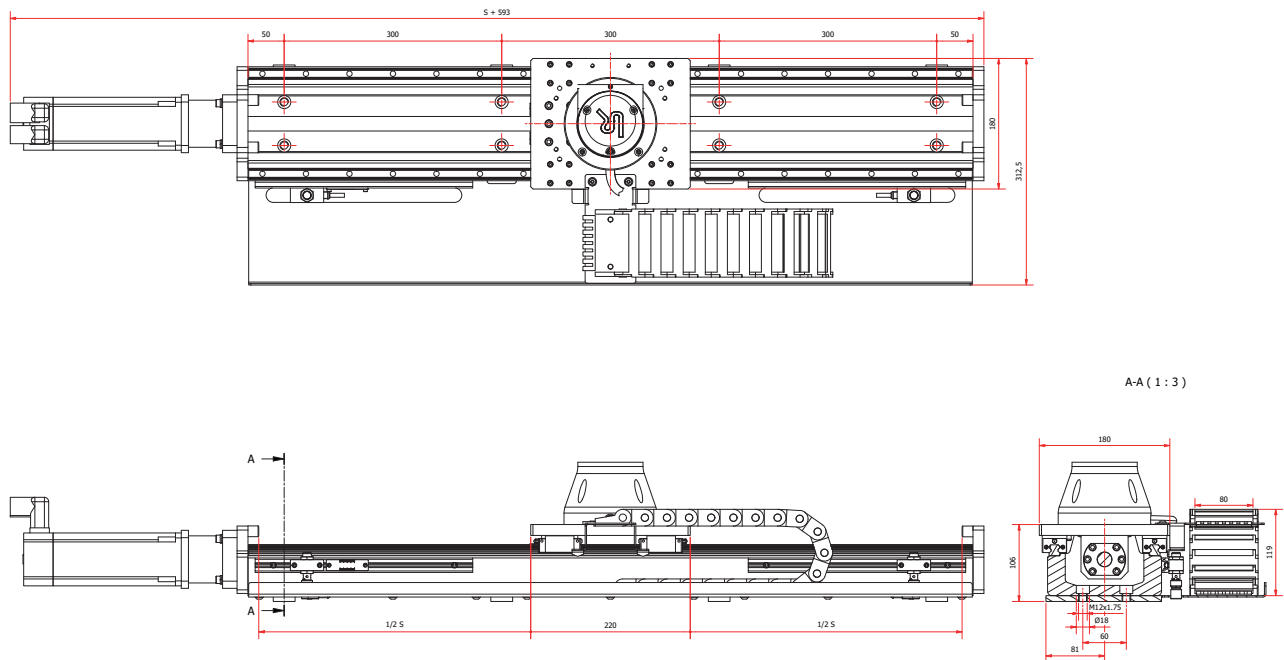
Ordering key

Belt driven = LMK - 3 - B - mm

Rack & pinion driven = LMK - 3 - RP - mm

(mm = hub length in mm)

LMK3 - BS



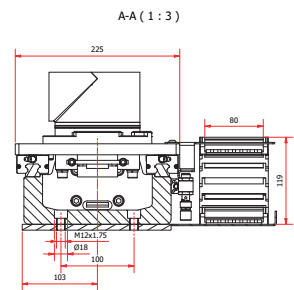
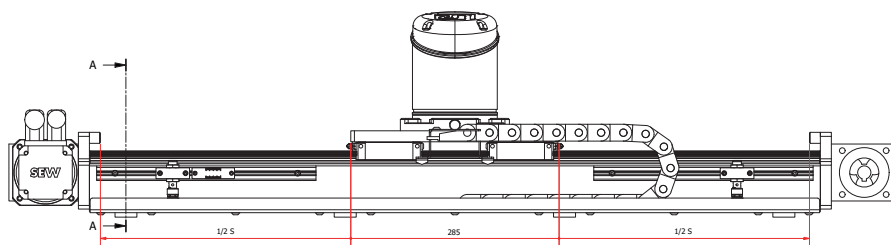
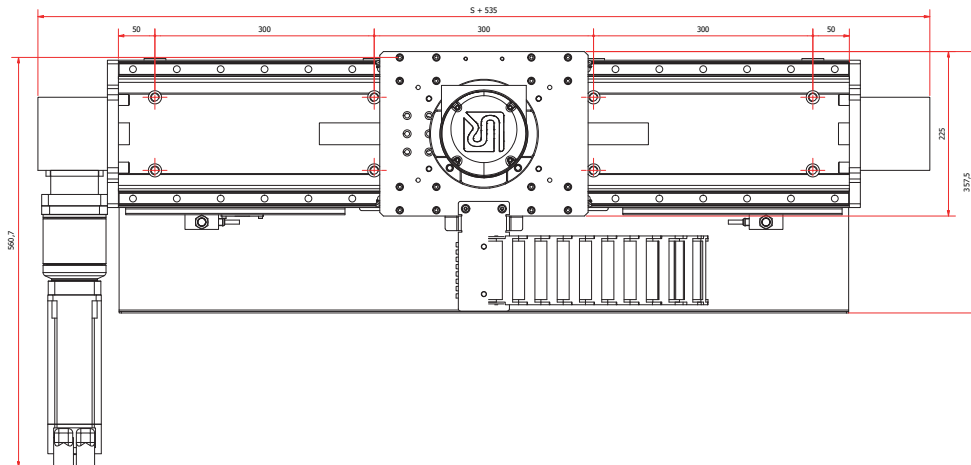
LMK3 - BS	
Robot type	UR3/UR3e
Max. stroke [mm]	2000
Max. speed [mm/sec]	250
Duty cycle [%]	100
Repeatability [mm]	0.05
Ambient temperature [°C]	-10 °C to 60 °C
Electrical input	380V

Ordering key

Ballscrew driven = LMK - 3 - BS - mm

(mm = hub length in mm)

LMK5 - B



LMK5 - B	
Robot type	UR5/UR5e
Max. stroke [mm]	50.000
Max. speed [mm/sec]	250
Duty cycle [%]	100
Repeatability [mm]	0.05
Ambient temperature [°C]	-10 °C to 60 °C
Electrical input	380V

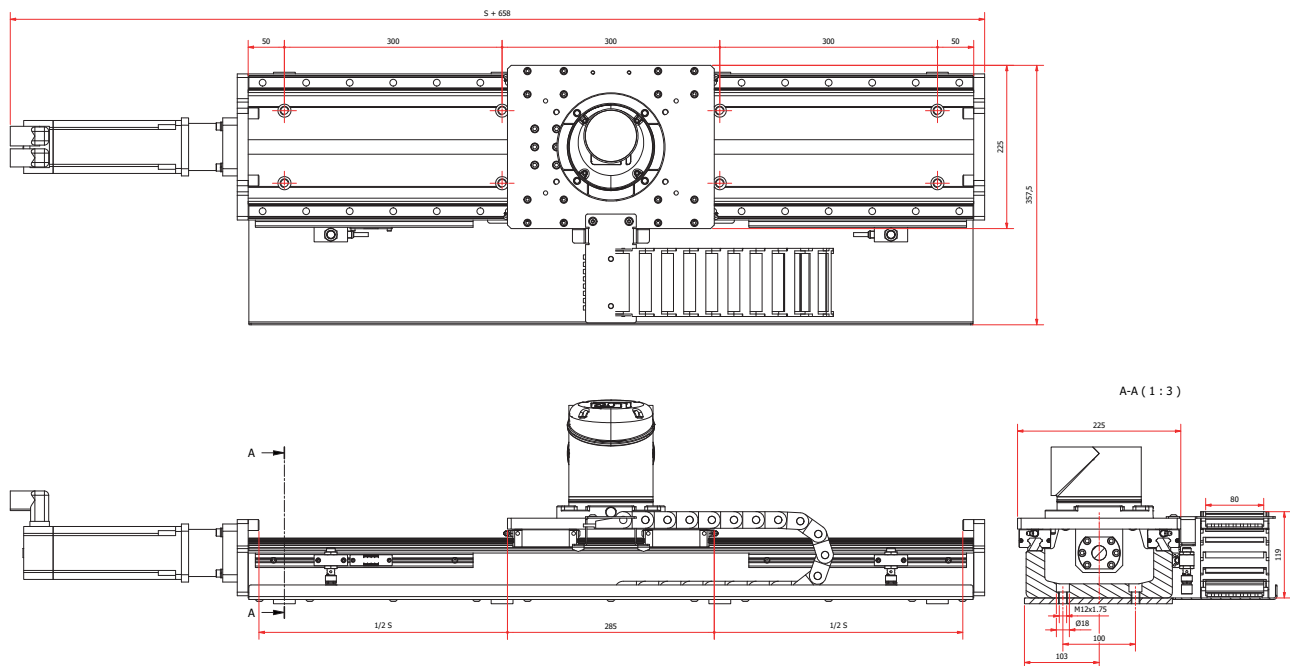
Ordering key

Belt driven = LMK - 5 - B - mm

Rack & pinion driven = LMK - 5 - RP - mm

(mm = hub length in mm)

LMK5 - BS



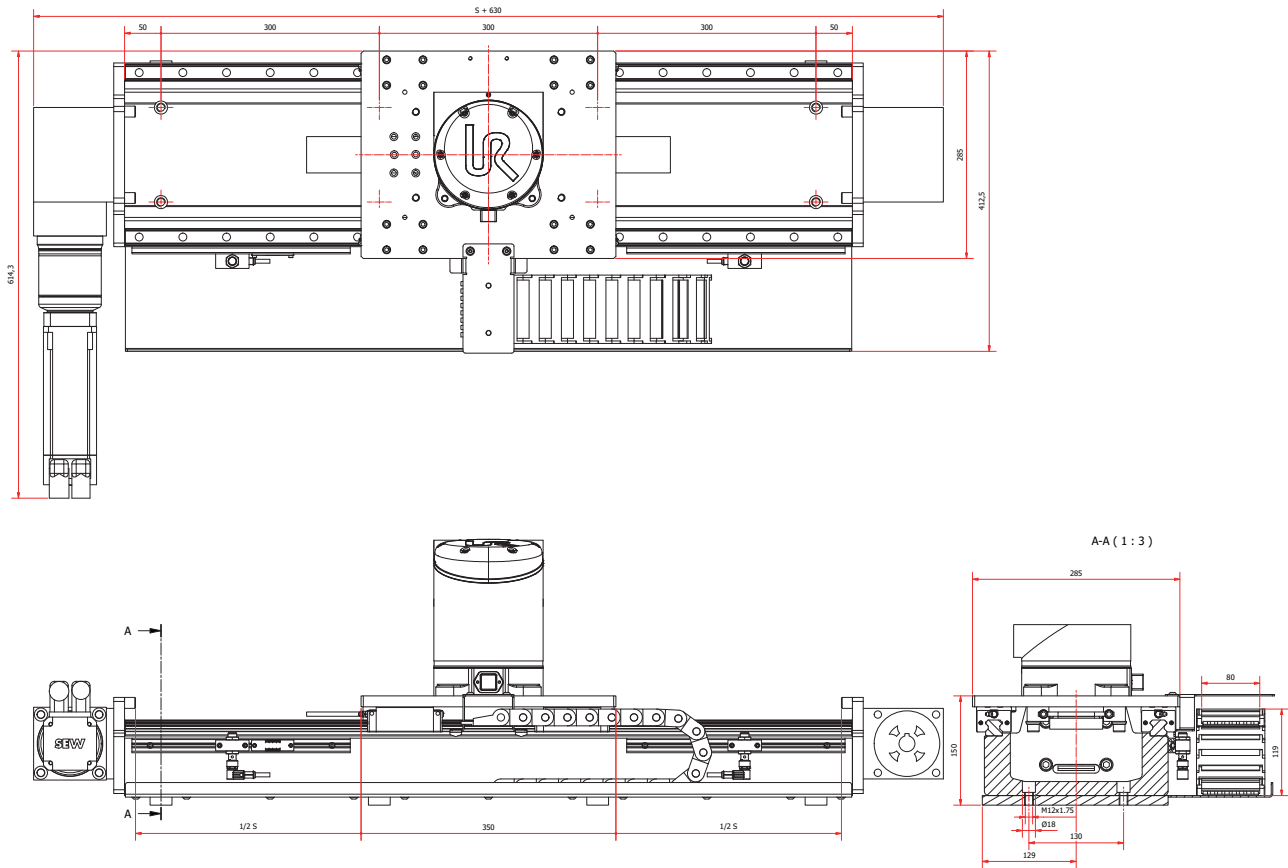
LMK5 - BS	
Robot type	UR5/UR5e
Max. stroke [mm]	2000
Max. speed [mm/sec]	250
Duty cycle [%]	100
Repeatability [mm]	0.05
Ambient temperature [°C]	-10 °C to 60 °C
Electrical input	380V

Ordering key

Ballscrew driven = LMK - 5 - BS - mm

(mm = hub length in mm)

LMK10 - B



LMK10 - B	
Robot type	UR10/UR10e
Max. stroke [mm]	50.000
Max. speed [mm/sec]	250
Duty cycle [%]	100
Repeatability [mm]	0.05
Ambient temperature [°C]	-10 °C to 60 °C
Electrical input	380V

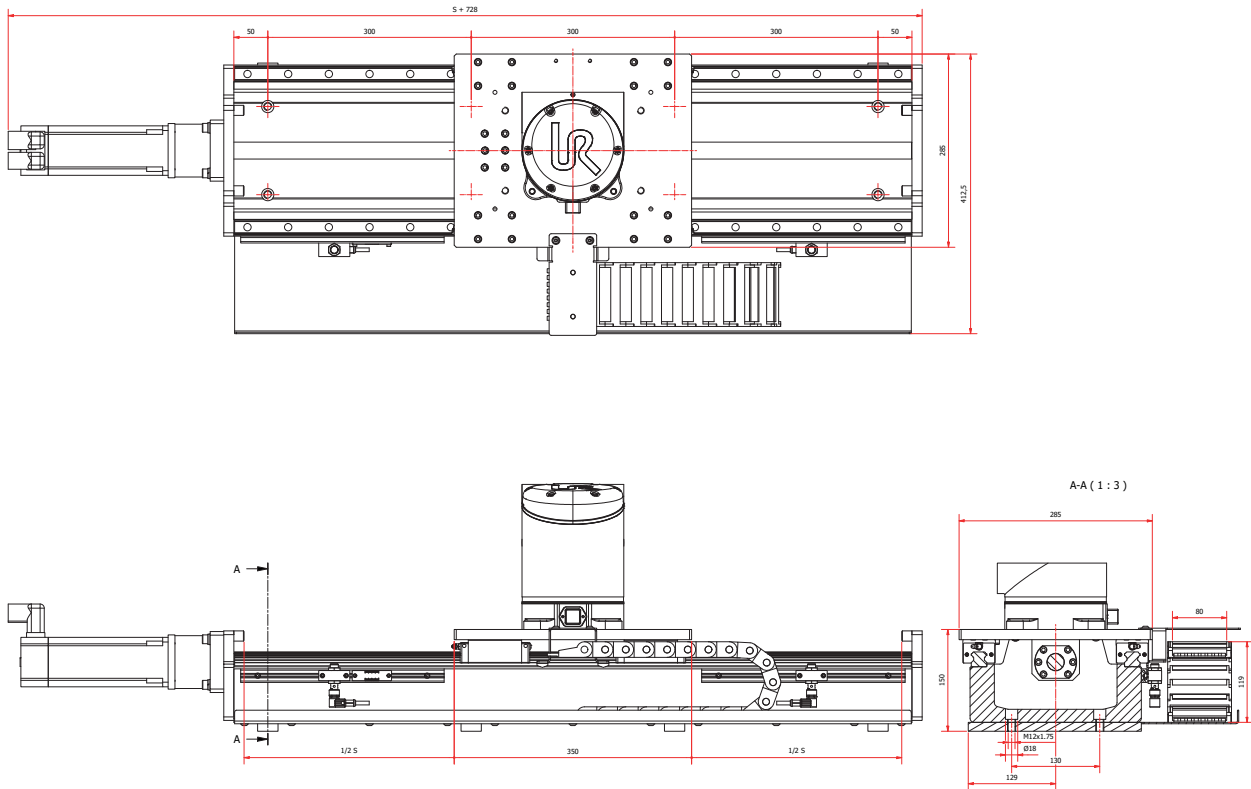
Ordering key

Belt driven = LMK - 10 - B - mm

Rack & pinion driven = LMK - 10 - RP - mm

(mm = hub length in mm)

LMK10 - BS



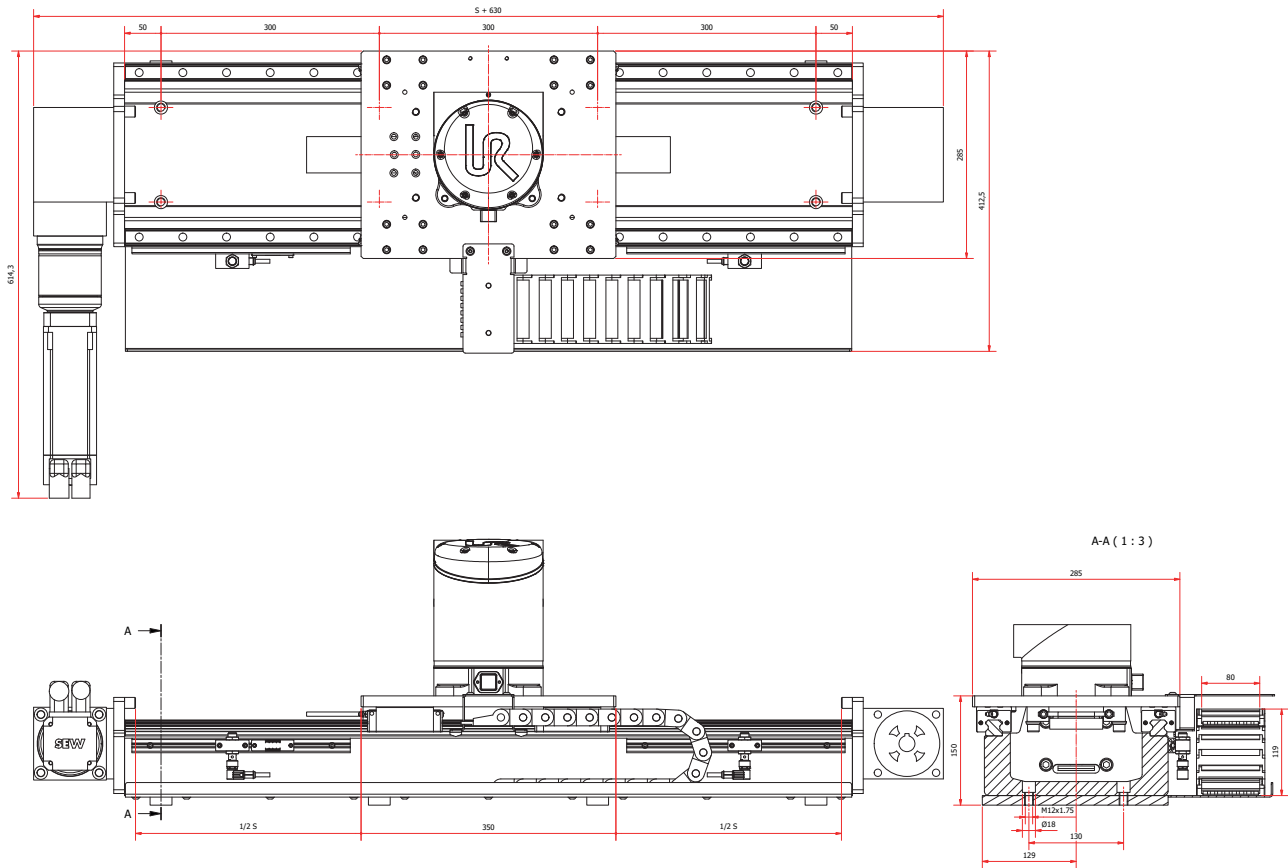
LMK10 - BS	
Robot type	UR10/UR10e
Max. stroke [mm]	2000
Max. speed [mm/sec]	250
Duty cycle [%]	100
Repeatability [mm]	0.05
Ambient temperature [°C]	-10 °C to 60 °C
Electrical input	380V

Ordering key

Ballscrew driven = LMK - 10 - BS - mm

(mm = hub length in mm)

LMK16 - B



LMK16 - B	
Robot type	UR16e
Max. stroke [mm]	50.000
Max. speed [mm/sec]	250
Duty cycle [%]	100
Repeatability [mm]	0.05
Ambient temperature [°C]	-10 °C to 60 °C
Electrical input	380V

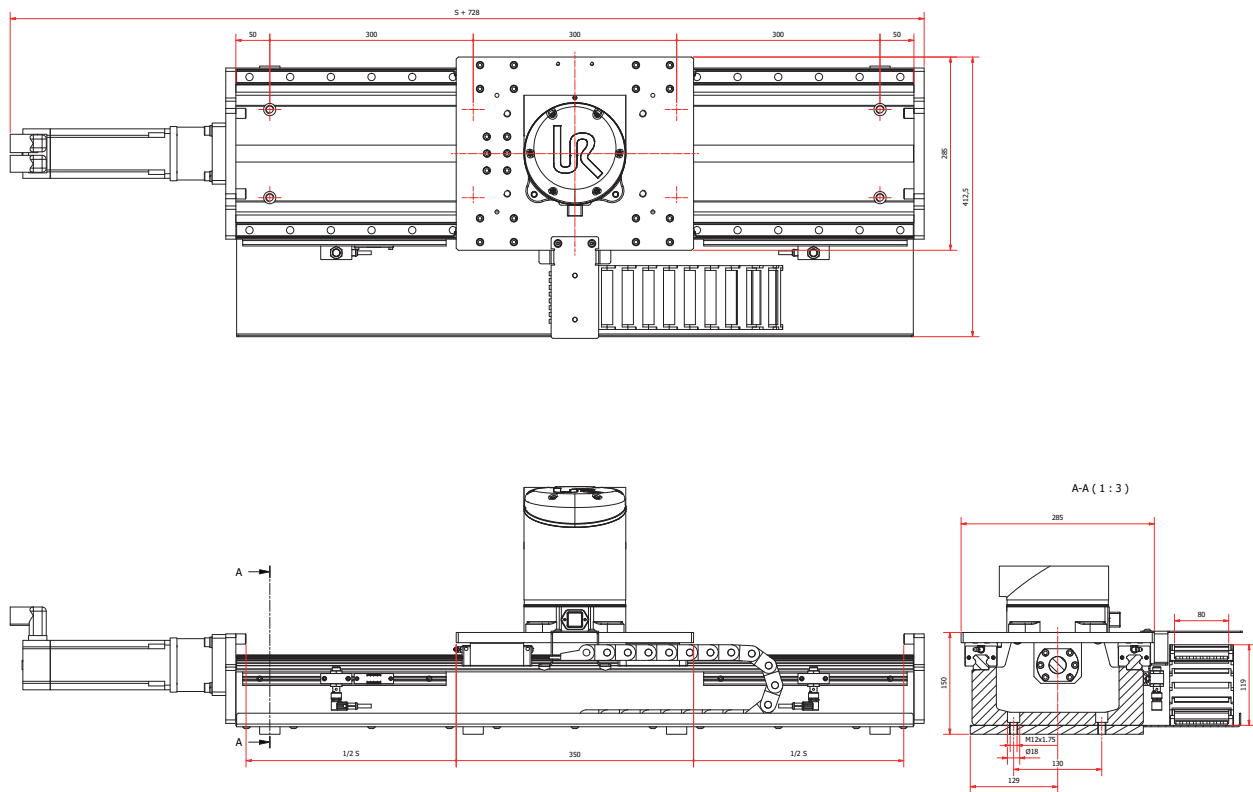
Ordering key

Belt driven = LMK - 16 - B - mm

Rack & pinion driven = LMK - 16 - RP - mm

(mm = hub length in mm)

LMK16 - BS



LMK16 - BS	
Robot type	UR16e
Max. stroke [mm]	2000
Max. speed [mm/sec]	250
Duty cycle [%]	100
Repeatability [mm]	0.05
Ambient temperature [°C]	-10 °C to 60 °C
Electrical input	380V

Ordering key

Ballscrew driven = LMK - 16 - BS - mm

(mm = hub length in mm)



CONTACT

THOR PARK 8300
3600 GENK (B)

M +32(0)474 81 18 73
E INFO@COBOTRACKS.COM

VAT BE0727.999.648